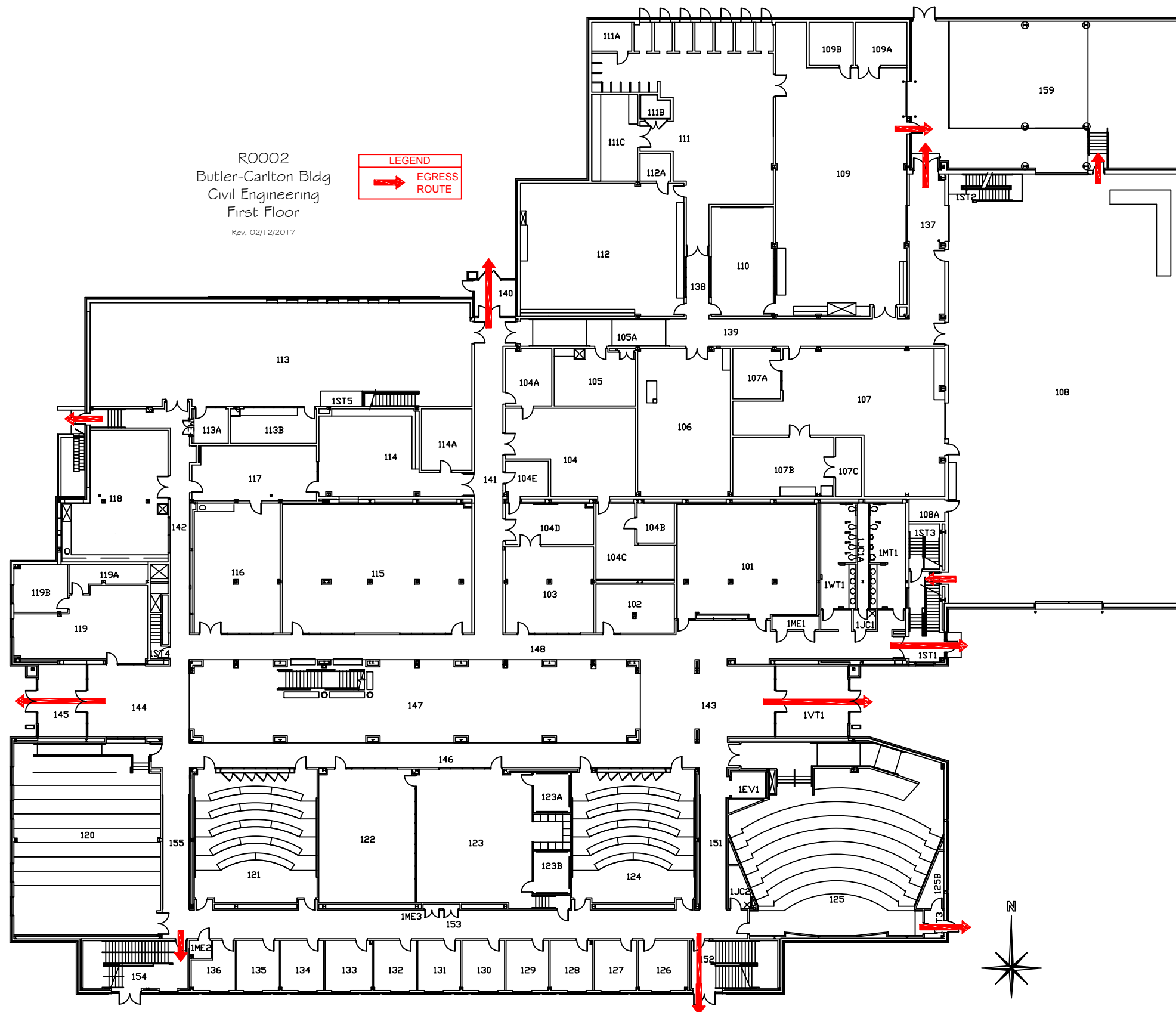


# Butler Carlton Hall

1401 N. Pine St.  
Rolla, MO 65409

Issue Date: 06/19/2013  
Sheet Size: ARCH A  
Scale: 1/64" = 1'-0"

Basement  
Sheet 1 of 5

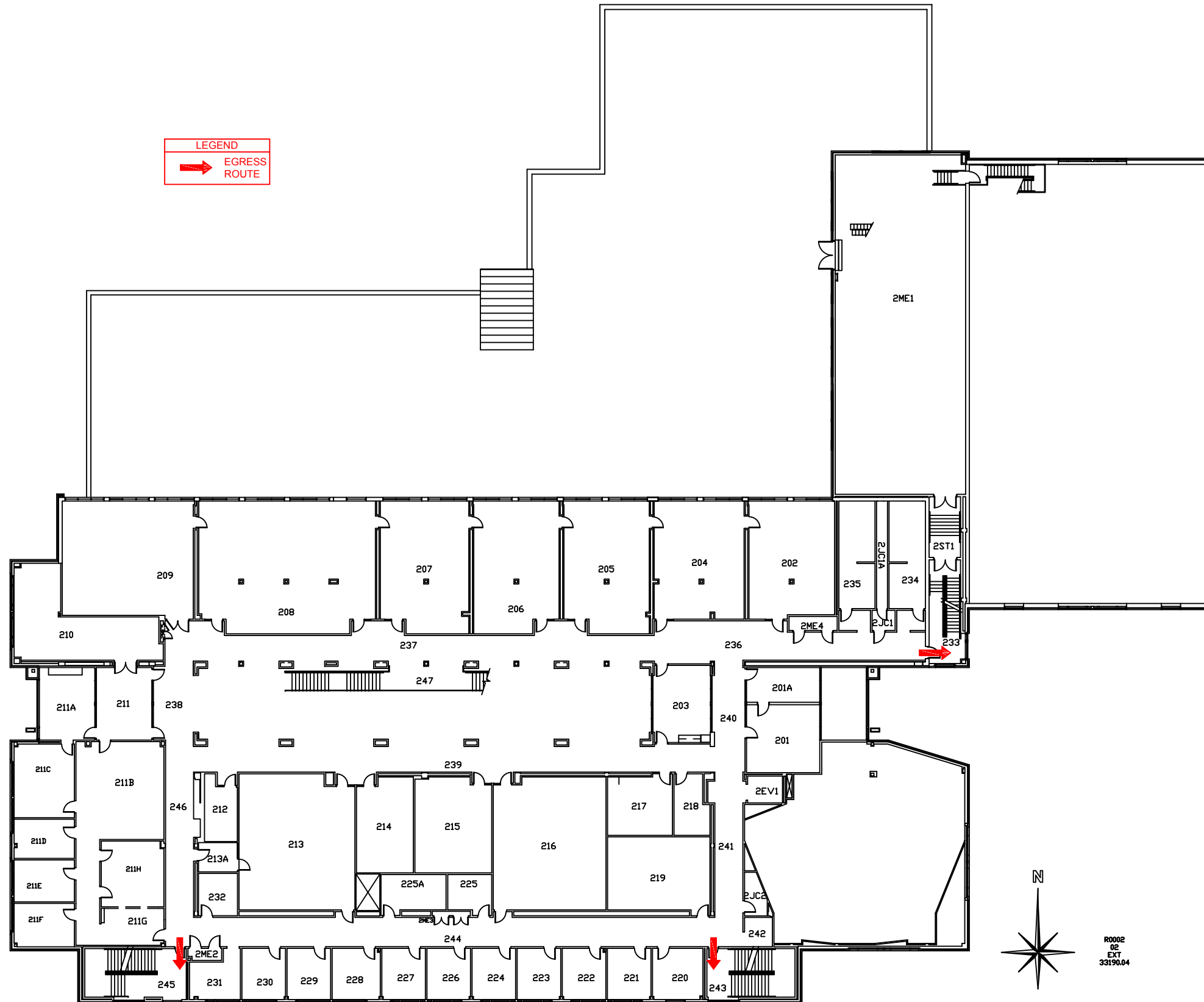


R0002  
Butler-Carlton Bldg  
Civil Engineering  
First Floor  
Rev. 02/12/2017

Butler-Carlton Civil Engineering  
Hall  
1401 N. Pine St.  
Rolla, MO 65409  
R0002

Issue Date: 02/12/2017  
Sheet Size: Ledger  
Scale: 1/32" = 1'-0"

First Floor  
Sheet 2 of 5



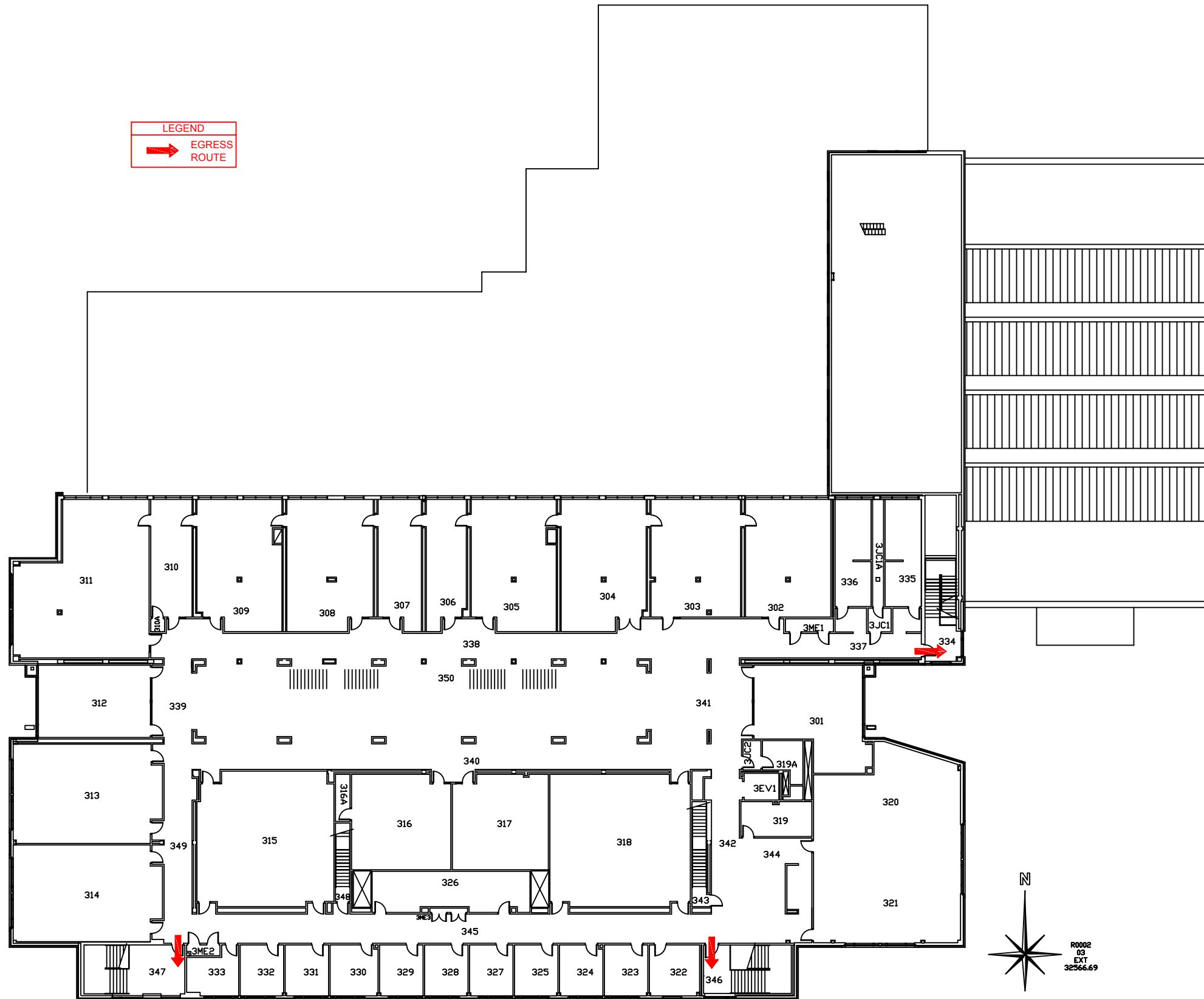
R0002  
02  
EXT  
33190.04

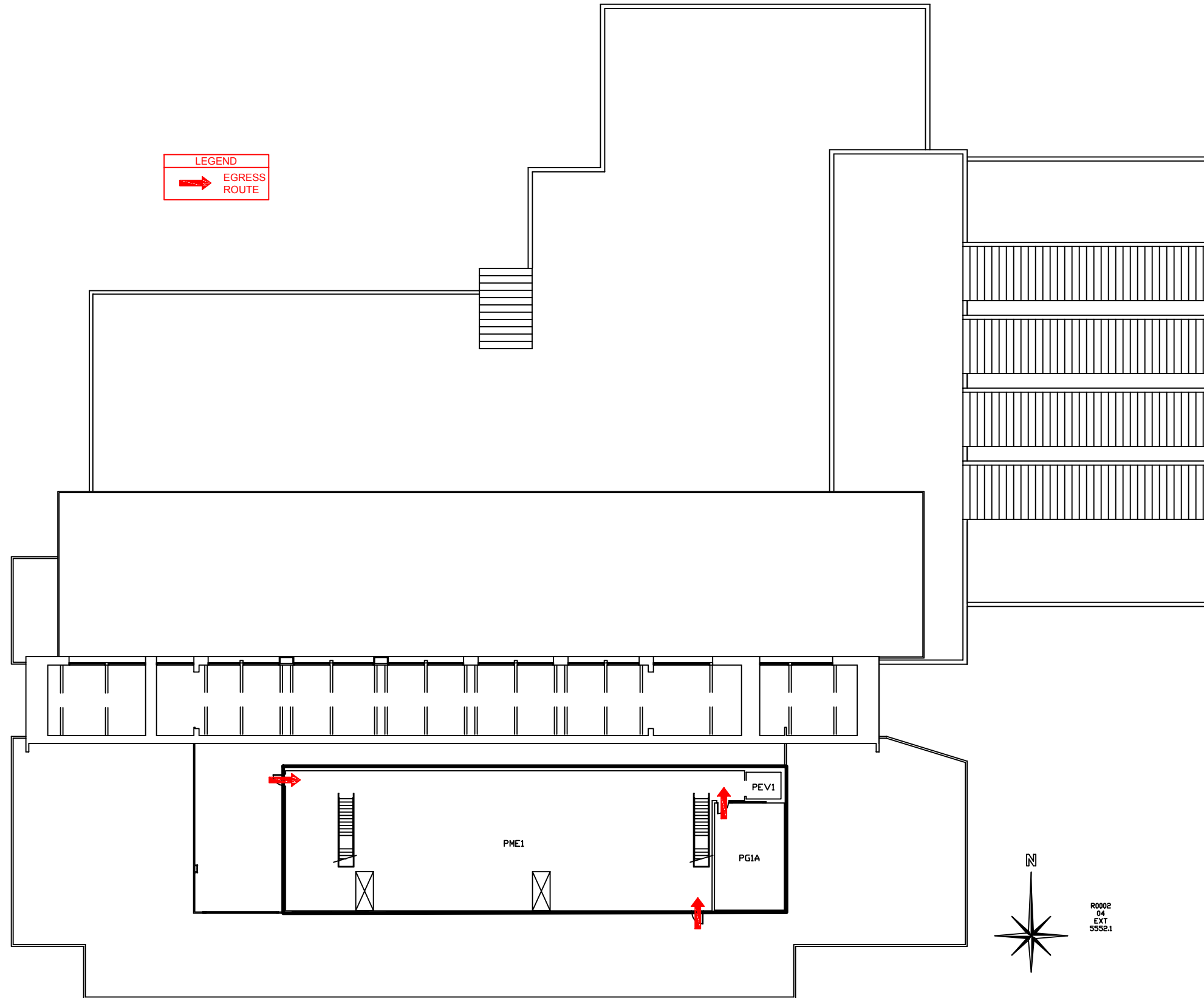
Butler-Carlton Civil Engineering  
Hall

1401 N. Pine St.  
Rolla, MO 65409  
R0002

Butler-Carlton Civil Engineering  
Hall

1401 N. Pine St.  
Rolla, MO 65409  
R0002





R0002  
04  
EXT  
5552.1

Butler-Carlton Civil Engineering  
Hall

1401 N. Pine St.  
Rolla, MO 65409  
R0002